

At Humanscale, we work hard to ensure that our environmental philosophy is reflected in each product we create.

GINKGO



POST-CONSUMER	0%
PRE-CONSUMER	0%

WOOL	87%
NYLON	13%

PVC-FREE	YES
ILFI RED-LIST FREE	YES
LPC MATERIAL ASSESSMENT	NO
PFC-FREE	YES
FLAME RETARDANT FREE*	YES
ANTIMICROBIAL ADDITIVE FREE	YES
ROHS COMPLIANT	YES
PROP 65 WARNING	NO

LOTUS



POST-CONSUMER	0%
PRE-CONSUMER	0%

POLYURETHANE	67%
NYLON	33%

PVC-FREE	YES
ILFI RED-LIST FREE	YES
LPC MATERIAL ASSESSMENT	YES
PFC-FREE	YES
FLAME RETARDANT FREE*	YES
ANTIMICROBIAL ADDITIVE FREE	NO
ROHS COMPLIANT	YES
PROP 65 WARNING	NO

CORDE 4



POST-CONSUMER	0%
PRE-CONSUMER	0%

NYLON	96%
POLYURETHANE	4%

PVC-FREE	YES
ILFI RED-LIST FREE	YES
LPC MATERIAL ASSESSMENT	YES
PFC-FREE	YES
FLAME RETARDANT FREE*	YES
ANTIMICROBIAL ADDITIVE FREE	YES
ROHS COMPLIANT	YES
PROP 65 WARNING	NO

FOURTIS

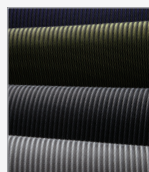


POST-CONSUMER	0%
PRE-CONSUMER	0%

NYLON	95%
POLYURETHANE	5%

PVC-FREE	YES
ILFI RED-LIST FREE	YES
LPC MATERIAL ASSESSMENT	YES
PFC-FREE	YES
FLAME RETARDANT FREE*	YES
ANTIMICROBIAL ADDITIVE FREE	YES
ROHS COMPLIANT	YES
PROP 65 WARNING	NO

MONOFILAMENT STRIPE

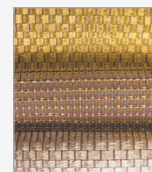


POST-CONSUMER	0%
PRE-CONSUMER	0%

TPE	70%
NYLON	19%
POLYESTER	11%

PVC-FREE	YES
ILFI RED-LIST FREE	YES
LPC MATERIAL ASSESSMENT	YES
PFC-FREE	YES
FLAME RETARDANT FREE*	YES
ANTIMICROBIAL ADDITIVE FREE	YES
ROHS COMPLIANT	YES
PROP 65 WARNING	NO

SILVER CHECK


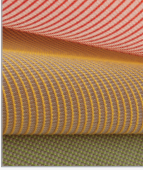



POST-CONSUMER	0%
PRE-CONSUMER	0%

TPE	48%
NYLON	21%
POLYESTER	31%

PVC-FREE	YES
ILFI RED-LIST FREE	YES
LPC MATERIAL ASSESSMENT	YES
PFC-FREE	YES
FLAME RETARDANT FREE*	YES
ANTIMICROBIAL ADDITIVE FREE	YES
ROHS COMPLIANT	YES
PROP 65 WARNING	NO

* Flame retardant added only upon client request for CAL 133 compliance.
LIFI is the abbreviation for International Living Futures Institute. LPC is the abbreviation for Living Product Challenge.

DASH			PINSTRIPE			CATENA		
	POST-CONSUMER	0%		POST-CONSUMER	0%		POST-CONSUMER	0%
	PRE-CONSUMER	0%		PRE-CONSUMER	0%		PRE-CONSUMER	0%
	TPE	38%		TPE	70%		TPE	59%
	NYLON	52%		NYLON	20%		NYLON	33%
	POLYESTER	11%		POLYESTER	10%		POLYESTER	9%
	PVC-FREE	YES		PVC-FREE	YES		PVC-FREE	YES
	ILFI RED-LIST FREE	YES		ILFI RED-LIST FREE	YES		ILFI RED-LIST FREE	YES
	LPC MATERIAL ASSESSMENT	YES		LPC MATERIAL ASSESSMENT	YES		LPC MATERIAL ASSESSMENT	YES
	PFC-FREE	YES		PFC-FREE	YES		PFC-FREE	YES
	FLAME RETARDANT FREE*	YES		FLAME RETARDANT FREE*	YES		FLAME RETARDANT FREE*	YES
	ANTIMICROBIAL ADDITIVE FREE	YES		ANTIMICROBIAL ADDITIVE FREE	YES		ANTIMICROBIAL ADDITIVE FREE	YES
	ROHS COMPLIANT	YES		ROHS COMPLIANT	YES		ROHS COMPLIANT	YES
	PROP 65 WARNING	NO		PROP 65 WARNING	NO		PROP 65 WARNING	NO

* Flame retardant added only upon client request for CAL 133 compliance.
 ILFI is the abbreviation for International Living Futures Institute. LPC is the abbreviation for Living Product Challenge.